

GSA SCHEDULE 47Q5MD20R0001

GSA

Schedule
Contract GS-07F-0222X



Authorized Federal Supply Schedule Price List

Effective through Modification: PS0041, August 27, 2020



Modular Management Group, Inc.



GSA Schedule Contract: GS-07F-0222X

DUNS: 606893969 | P 817.740.9767 | gsasales@mmginc.info | www.modularmanagementgroup.com



Table of Contents

Schedule Price List & Contractor Information	3
MMG Modular Building for Government Applications	4
SIN: 332311P Product Name: 80 SQFT SCIF Container.....	4
SIN: 332311P Product Name: 160 SQFT SCIF Container.....	5
SIN: 332311P Product Name: 320 SQFT SCIF Container.....	6
SIN: 332311P Product Name: 640 SQFT SCIF Container.....	7
SIN: 332311P SIN: 532490P Product Name: Prefabricated Modular Building.....	8
SIN: 332311P SIN: 532490P Product Name: ISO Office.....	9
SIN: 332311P SIN: 532490P Product Name: ICD/ICS 705 Compliant SCIF/SAPF Facility.....	10
SIN: 332311P SIN: 532490P Product Name: After Action Review Trainer (AAR).....	11
SIN: 332311P SIN: 532490P Product Name: Modular Office Building.....	12
SIN: 332311P SIN: 532490P Product Name: Commercial Office/Locker Room Building.....	13
SIN: 332311P SIN: 532490P Product Name: Two-Story Medical/Mental Health Modular Building.....	14
SIN: 332311P SIN: 532490P Product Name: MMG Washroom Facility.....	15
Awarded SINS & Ordering Information	17
Installation Services: Description of Services	18
Pricing of Services	19

GSA SCHEDULE 47QSMD20R0001 Schedule Price List



General Services Administration

Federal Supply Service

AUTHORIZED FEDERAL SUPPLY SCHEDULE PRICE LIST

(Version Last Updated on Aug 27, 2020)

- **Schedule Title:** 47QSMD20R0001 – Consolidated GSA Multiple Award Schedule
- **FSC Group:** 54 – Pre-engineered/Prefabricated Buildings and Structures
- **Contract Number:** [GS-07F-0222X](#)
- **Contract Period:** January 15, 2011 through January 14, 2021
- **Price List Effective through Modification:** PS0041, August 27, 2020

Contractor Information

Sales		Contract Administrator
Name:	Modular Management Group, Inc.	Tim Morrow
Address:	6602 Plaza Parkway Fort Worth TX 76116	Phone: 314.842.6339
Phone:	817.740.9767	Email: tjmorrow@gsacenter.com
Fax:	817.625.7450	
Email:	gsasales@mmginc.info	
Website:	www.modularmanagementgroup.com	
Business Type:	Minority Owned Small Business	
DUNS:	606893969	



Advantage!®

On-line access to contract ordering information, terms and conditions, up-to-date pricing, and the option to create an electronic delivery order are available through GSA Advantage!, a menu-driven database system: <http://www.gsaadvantage.gov>

MMG Modular Buildings for Government Applications

Special Item Number: 332311P

Pre-Engineered and Prefabricated Buildings and Structures for Storage Solutions

Part Number	810 SCIF
Product Name	80 SQFT SCIF Container
Price	\$89,695.20 or \$1,121.19 SF <i>(Add delivery, installation, and options – see pgs. 18-19)</i>
Description	Designed to meet ICD 705 standards for SCIF/SAPF. STC50 door with X10/daytime access control lever set. 100-amp electrical service, HVAC and shielded com connectivity to workstations included. Intrusion detection prep included.
Options	Increased EMSEC/TEMPEST Shielding, perimeter wall enhancement, furnishings, sound masking, interior finishes, generator, intrusion detection system, CCTV. Additional options available upon request.



GSA SCHEDULE 47QSMD20R0001 Schedule Price List



Special Item Number: 332311P

Pre-Engineered and Prefabricated Buildings and Structures for Storage Solutions

Part Number	820 SCIF
Product Name	160 SQFT SCIF Container
Price	\$128,667.20 or \$804.17 SF <i>(Add delivery, installation, and options – see pgs. 18-19)</i>
Description	Designed to meet ICD 705 standards for SCIF/SAPF. STC50 door with X10/daytime access control lever set. 125-amp electrical service, HVAC and shielded com connectivity to workstations included. Intrusion detection prep included.
Options	Increased EMSEC/TEMPEST Shielding, perimeter wall enhancement, furnishings, sound masking, interior finishes, generator, intrusion detection system, CCTV. Additional options available upon request.



GSA SCHEDULE 47QSMD20R0001 Schedule Price List



Special Item Number: 332311P

Pre-Engineered and Prefabricated Buildings and Structures for Storage Solutions

Part Number	840 SCIF
Product Name	320 SQFT SCIF Container
Price	\$176,739.20 or \$552.31 SF (Add delivery, installation, and options – see pgs. 18-19)
Description	Designed to meet ICD 705 standards for SCIF/SAPF. STC50 door with X10/daytime access control lever set. 150-amp electrical service, HVAC and shielded com connectivity to workstations included. Intrusion detection prep included.
Options	Increased EMSEC/TEMPEST Shielding, perimeter wall enhancement, furnishings, sound masking, interior finishes, generator, intrusion detection system, CCTV. Additional options available upon request.



GSA SCHEDULE 47QSMD20R0001 Schedule Price List



Special Item Number: 332311P

Pre-Engineered and Prefabricated Buildings and Structures for Storage Solutions

Part Number	1640 SCIF
Product Name	640 SQFT SCIF Container
Price	\$331,315.20 or \$517.68 SF <i>(Add delivery, installation, and options – see pgs. 18-19)</i>
Description	Designed to meet ICD 705 standards for SCIF/SAPF. STC50 door with X10/daytime access control lever set. 225-amp electrical service, HVAC and shielded com connectivity to workstations included. Intrusion detection prep included.
Options	Increased EMSEC/TEMPEST Shielding, perimeter wall enhancement, furnishings, sound masking, interior finishes, generator, intrusion detection system, CCTV. Additional options available upon request.



GSA SCHEDULE 47QSM20R0001 Schedule Price List



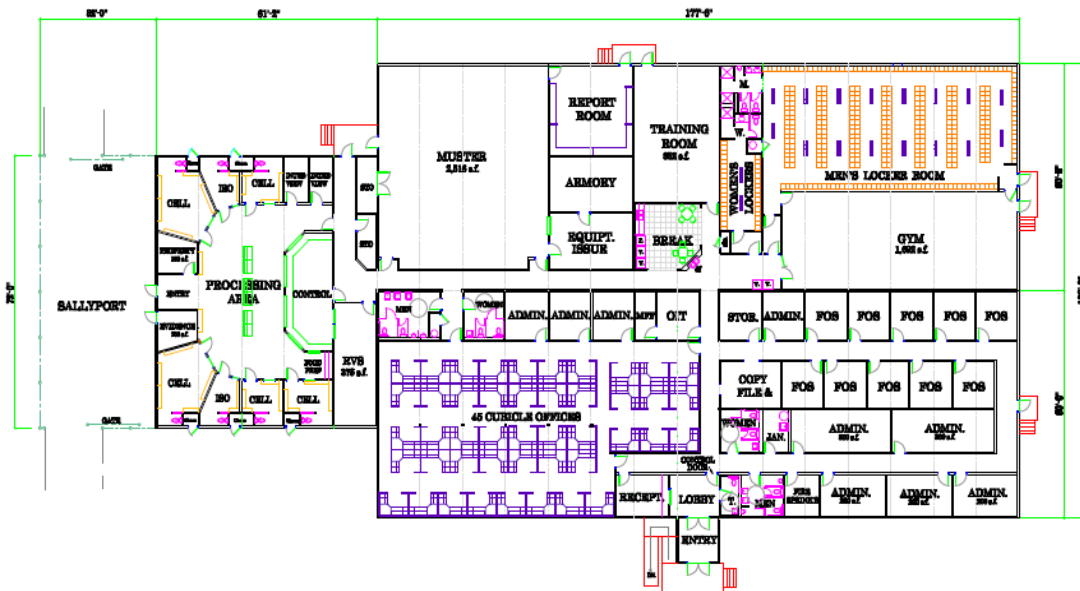
Special Item Number: 33231P

Pre-Engineered and Prefabricated Buildings and Structures for Storage Solutions

Special Item Number: 532490P

Lease/Rental of Pre-Engineered/Prefabricated Buildings and Structures

Part Number	240120 PROCESS
Product Name	Prefabricated Modular Building
Price	\$69.11 SF (Add delivery, installation, and options – see pgs. 18-19)
Lease Option Price	\$ 2.74 SF (12-month min., add delivery & return freight, installation, dismantle, and options – see pgs. 18-19)
Description	<p>This 240'x120' 28,800 SF building includes 2,051 LF of interior partitioning, 16 exterior doors, 67 interior doors, 18 windows, 255 recessed fluorescent lights, 5 handicap toilets, 12 standard toilets, 4 urinals, 18 lavatories, 3 showers, 1 double bowl sink and 1 janitor sink.</p> <p>Included are secure detention cells with penal grade toilet/lavatories, penal grade lighting, doors and vision windows. The floor, walls and ceiling of the holding cells are finished with industrial grade material to allow complete hose washing as necessary.</p> <p>This building meets CBP standards and can be ready for occupancy within 6 months ARO.</p>



GSA SCHEDULE 47QSM20R0001 Schedule Price List



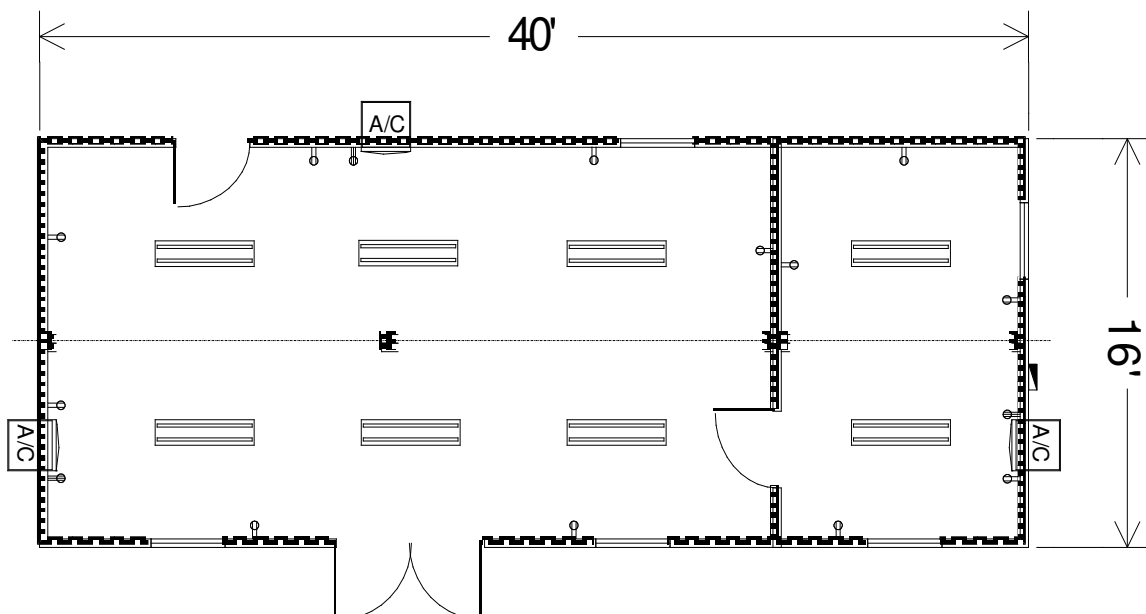
Special Item Number: 332311P

Pre-Engineered and Prefabricated Buildings and Structures for Storage Solutions

Special Item Number: 532490P

Lease/Rental of Pre-Engineered/Prefabricated Buildings and Structures

Part Number	1640 ISO
Product Name	ISO Office
Price	\$54.53 SF (Add delivery, installation, and options – see pgs. 18-19)
Lease Option Price	\$ 2.16 SF (12-month min., add delivery & return freight, installation, dismantle, and options – see pgs. 18-19)
Description	<p>This building is made using standard 8'x40' ISO shipping containers and joined together to form a complete building with insulation, finished interiors, HVAC and electrical.</p> <p>Additionally, it includes 2 exterior doors, 1 interior door, 4 windows and 16 LF interior wall. This building takes advantage of the existing intermodal, military and the worldwide commercial transportation industries infrastructure and can be ready for occupancy within 2 months ARO.</p>



GSA SCHEDULE 47QSM20R0001 Schedule Price List



Special Item Number: 332311P

Pre-Engineered and Prefabricated Buildings and Structures for Storage Solutions

Special Item Number: 532490P

Lease/Rental of Pre-Engineered/Prefabricated Buildings and Structures

Part Number	40K SCIF
Product Name	ICD/ICS 705 Compliant SCIF/SAPF Facility
Price	\$192.43 SF (Add delivery, installation, and options – see pgs. 18-19)
Lease Option Price	\$ 6.40 SF (12-month min., add delivery & return freight, installation, dismantle, and options – see pgs. 18-19)
Description	The ICD/ICS 705 Compliant SCIF/SAPF is a 285'x140' single story stand-alone modular building that can be temporary and /or relocated. While standard configuration is a single story, design capability allows the building to also be configured into a multiple story or even installed inside existing facility. Other features include STC Rated perimeter and other physical and acoustic high security designed to exceed ICD 705 & JAFAN 6/9 Standards, ATRP requirements and installation performed by vetted workforce.
Options	<ul style="list-style-type: none"> • TEMPEST Mitigations, Including RF shielding up to 100DB • Intrusion Detection and Access Controls to meet ICD 705/UL 2050 standards • Raised Floors • Ballistic Ratings • Secure Com/Data systems, infrastructure and cabling • Accreditation documentation packages (Pre-con & Post FFC, TEMPEST CA, etc.) • Special high security testing (Acoustic RRF, etc.) • Program specific security requirements • Segregated Program Spaces (Compartmented Areas)



OVERALL PLAN

GSA SCHEDULE 47QSM20R0001 Schedule Price List



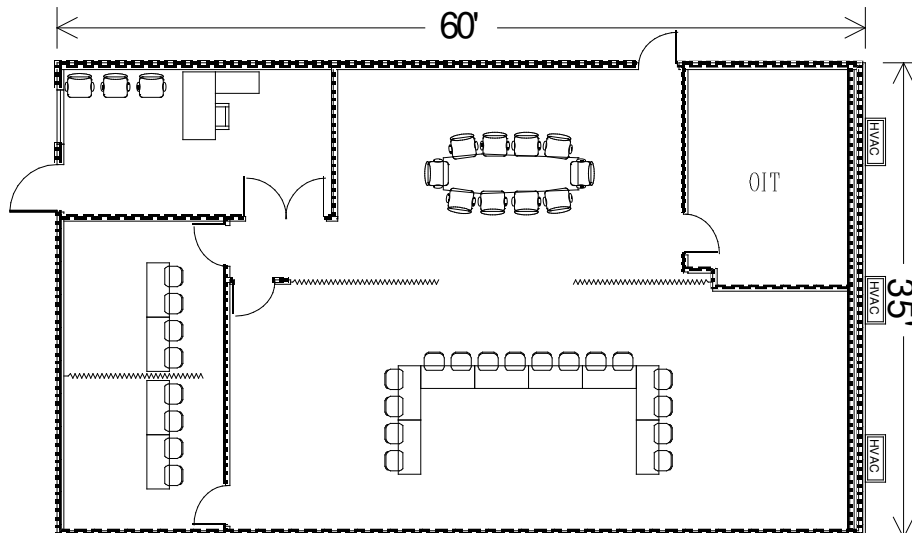
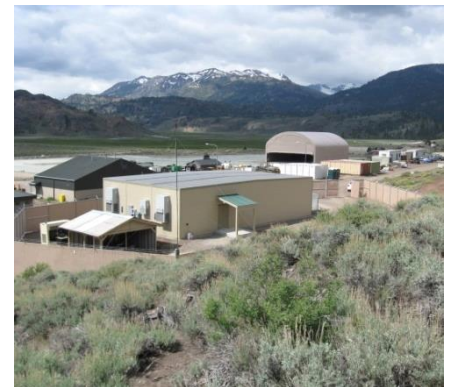
Special Item Number: 332311P

Pre-Engineered and Prefabricated Buildings and Structures for Storage Solutions

Special Item Number: 532490P

Lease/Rental of Pre-Engineered/Prefabricated Buildings and Structures

Part Number	3660 TRNG
Product Name	After Action Review Trainer (AAR)
Price	\$137.32 SF (Add delivery, installation, and options – see pgs. 18-19)
Lease Option Price	\$ 5.45 SF (12-month min., add delivery & return freight, installation, dismantle, and options – see pgs. 18-19)
Description	<p>This 36'x60' 2,160 SF building is designed and built to accommodate the latest Super High Tech electronic training systems available anywhere. It includes 112 LF of interior walls, 2 exterior doors, 5 interior doors, 1 window and 18 recessed fluorescent lights. All interior walls are built with an STC 45 sound attenuation rating to deaden the transmission of sound from one room to the next. All exterior and interior doors are equipped with cypher locks for added security. A commercial grade t-grid suspended ceiling is installed at 9' AFF (nominal) and the interior walls are finished with commercial grade vinyl wall covering on 5/8" gypsum board.</p> <p>These buildings can be ready for occupancy within 6 months ARO.</p>



GSA SCHEDULE 47QSMD20R0001 Schedule Price List



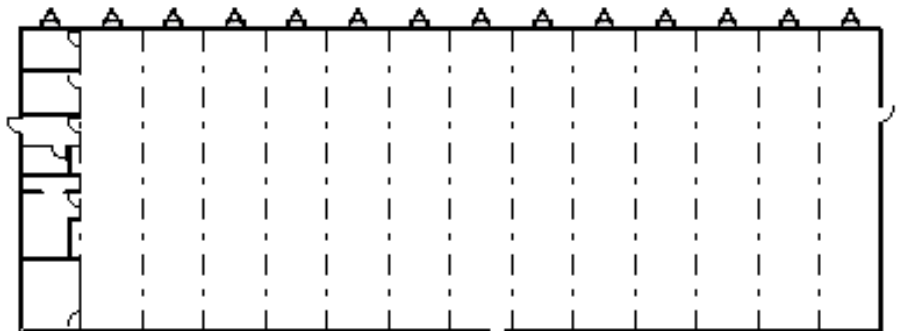
Special Item Number: 332311P

Pre-Engineered and Prefabricated Buildings and Structures for Storage Solutions

Special Item Number: 532490P

Lease/Rental of Pre-Engineered/Prefabricated Buildings and Structures

Part Number	16860 OPN OFC
Product Name	Modular Office Building
Price	\$44.45 SF (Add delivery, installation, and options – see pgs. 18-19)
Lease Option Price	\$ 1.76 SF (12-month min., add delivery & return freight, installation, dismantle, and options – see pgs. 18-19)
Description	<p>These 14-section, 168'x60' 10,080 SF modular office buildings have 96 LF of interior walls, 3 exterior doors, 6 interior doors, 15 windows, 2 handicap toilets, 1 standard toilet, 1 urinal, 2 lavatories, 1 sink and 1 janitor service sink. No floor covering, interior lights or finished ceiling is included in the large open area.</p> <p>These buildings can be ready for occupancy within 6 months ARO.</p>



GSA SCHEDULE 47QSM20R0001 Schedule Price List



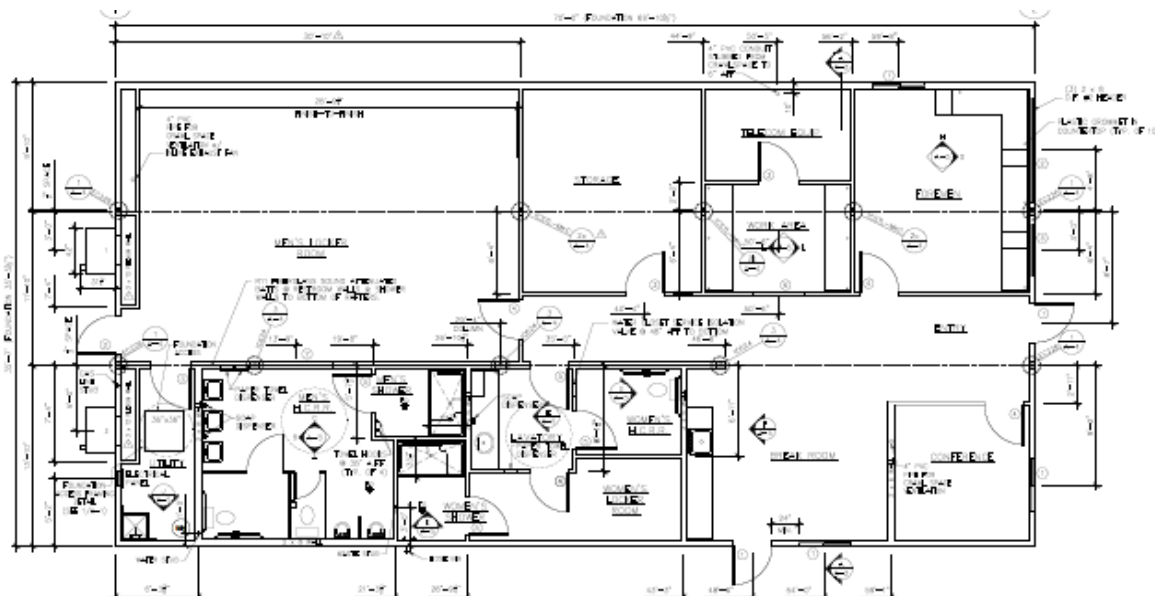
Special Item Number: 332311P

Pre-Engineered and Prefabricated Buildings and Structures for Storage Solutions

Special Item Number: 532490P

Lease/Rental of Pre-Engineered/Prefabricated Buildings and Structures

Part Number	3670 BNSF
Product Name	Commercial Office/Locker Room Building
Price	\$106.79 SF (Add delivery, installation, and options – see pgs. 18-19)
Lease Option Price	\$ 4.23 SF (12-month min., add delivery & return freight, installation, dismantle, and options – see pgs. 18-19)
Description	<p>This three-section, 36'x70' 2,520 SF building has 252 LF interior walls, 3 exterior doors, 11 interior doors, 5 windows, 2 handicap toilets, 1 standard toilet, 2 urinals, 4 lavatories, 2 showers, 1 sink and 1 mop sink. The ceiling is suspended t-grid with 26 recessed lights.</p> <p>The interior finish is vinyl covered sheetrock and vinyl floor tile. The exterior is high rib steel siding and high rib steel roofing.</p>



GSA SCHEDULE 47Q SMD20R0001 Schedule Price List



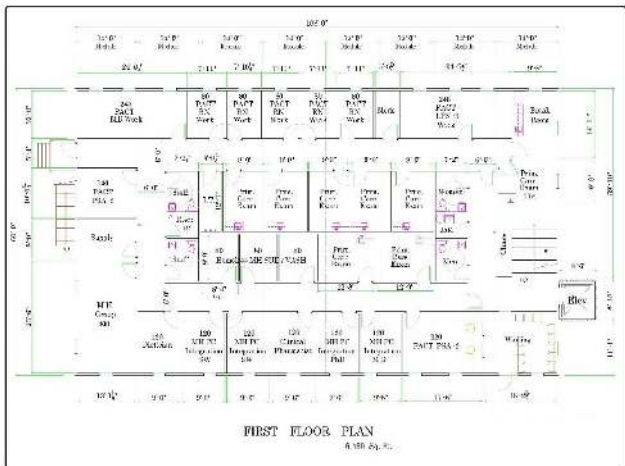
Special Item Number: 332311P

Pre-Engineered and Prefabricated Buildings and Structures for Storage Solutions

Special Item Number: 532490P

Lease/Rental of Pre-Engineered/Prefabricated Buildings and Structures

Part Number	60108-2 MHC
Product Name	Two-Story Medical/Mental Health Modular Building
Price	\$153.80 SF (Add delivery, installation, and options – see pgs. 18-19)
Lease Option Price	\$ 4.29 SF (12-month min., add delivery & return freight, installation, dismantle, and options – see pgs. 18-19)
Description	<p>This two-story, type II noncombustible, brick building includes office space, primary care exam rooms, waiting area, break room, group rooms, IT room, conference room, staff and patient restrooms, and roof top A/C units. The building is 60'x108' per floor, the interior is 12,960 SF (6,480 SF per floor) of finished area with full height walls, sound insulation, mill work, suspended ceiling, floor covering, VCT, carpet and ceramic tile in restrooms.</p> <p>This facility is also equipped with a modular elevator, interior stairs and exterior stairs in the event of the need for emergency exit.</p>

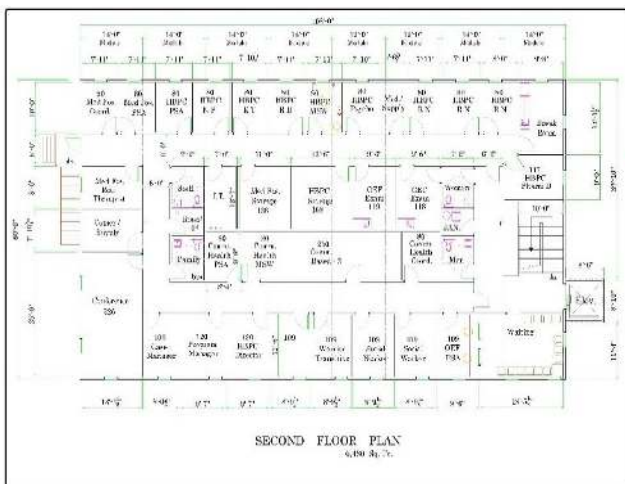


Multiple-Store Config
 4000+ Square Feet
 1000+ sq. ft. per module, 10,000+ sq. ft.

Operation Enduring
 Freedom

1000+ sq. ft.
 N/A
 LBM

1



Multiple-Store Config
 4000+ Square Feet
 1000+ sq. ft. per module, 10,000+ sq. ft.

Operation Enduring
 Freedom

1000+ sq. ft.
 N/A
 LBM

2



GSA SCHEDULE 47QSM20R0001 Schedule Price List



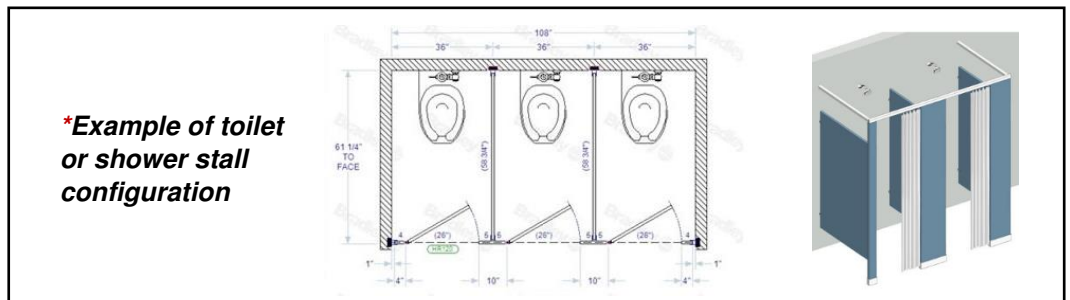
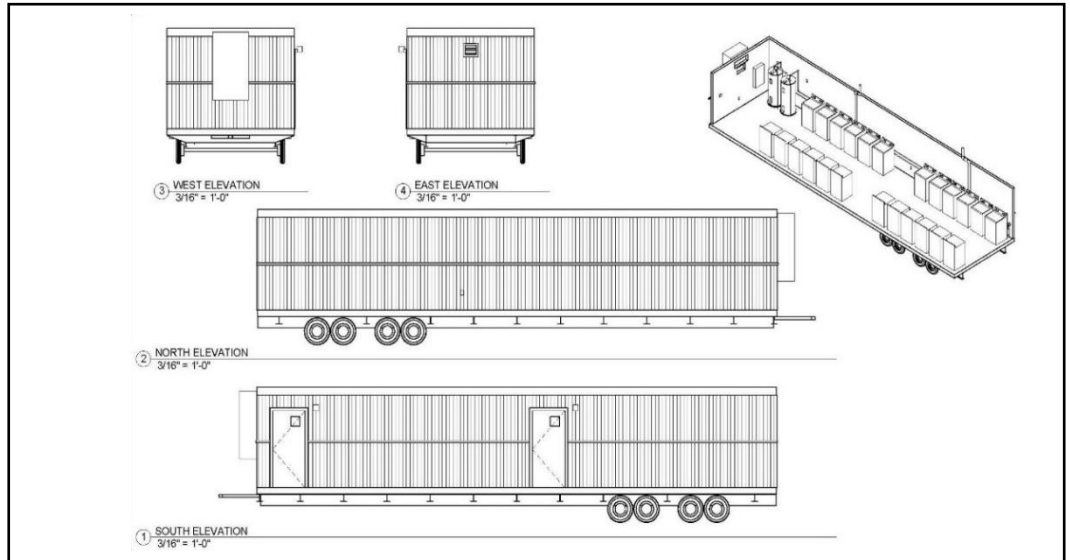
Special Item Number: 332311P

Pre-Engineered and Prefabricated Buildings and Structures for Storage Solutions

Special Item Number: 532490P

Lease/Rental of Pre-Engineered/Prefabricated Buildings and Structures

Part Number	1248 Washroom
Product Name	MMG Washroom Facility
Price	\$90.96 SF (Add delivery, installation, and options – see pgs. 18-19)
Lease Option Price	\$ 4.02 SF (12-month min., add delivery & return freight, installation, dismantle, and options – see pgs. 18-19)
Description	<p>This one-story, 576 SF MMG Washroom Facility is 12'x48'.</p> <p>The MMG Washroom Facility includes two exterior doors and two 80-gallon electric water heaters. This Washroom Facility can be retrofitted with a series of toilets, washer/dryers, individual showers or combination. In the photos below, the Washroom Building shows 12 heavy duty washers, and 12 heavy-duty electric dryers; however, the building is also available with toilet or shower stall configuration.*</p> <p>The interior includes t-grid ceiling, recess lighting, VCG wall covering, VCT flooring. Additionally, a 400-amp electrical disconnect is included, and a wall-mounted HVAC unit free blowing with return air grill.</p>



GSA SCHEDULE 47QSM D20R0001

Schedule Price List



General Services Administration

Awarded SINS & Ordering Information

AWARDED SPECIAL ITEM NUMBER(S)

SIN	Description
332311P	Pre-Engineered and Prefabricated Buildings and Structures for Storage Solutions Includes storage structures made of wood, fiberglass, steel, aluminum, metal, tension fabric, pre-cast concrete, etc. All options include accessories and may contain recycled or bio-based materials.
532490P	Lease/Rental of Pre-Engineered/Prefabricated Buildings and Structures Includes portable/mobile office buildings and temporary living quarters, such as mobile homes and tension fabric structures. The lease or rental of these portable structures are suitable for emergencies and disaster recovery efforts.
238910	Installation and Site Preparation Services Include installation and site preparation services ordered in conjunction with buildings and structures, building materials, storage tanks/systems, services for alternative energy solutions or power distribution equipment, and fuel dispensing and management systems purchased under this schedule contract. For ordering limitations and information, refer to the Special Ordering Procedures/Ordering Guide posted on www.gsa.gov
OLM	Order-Level Materials (OLM) OLMs are supplies and/or services acquired in direct support of an individual task or delivery order placed against a Schedule contract or BPA. OLM pricing is not established at the Schedule contract or BPA level, but at the order level. Since OLMs are identified and acquired at the order level, the ordering contracting officer (OCO) is responsible for making a fair and reasonable price determination for all OLMs. OLMs are procured under a special ordering procedure that simplifies the process for acquiring supplies and services necessary to support individual task or delivery orders placed against a Schedule contract or BPA. Using this new procedure, ancillary supplies and services not known at the time of the Schedule award may be included and priced at the order level.
ANCRA	Ancillary Repair and Alterations - Includes ancillary repair and alteration services ordered in conjunction with the delivery, or installation of products or services. These services are non-complex in nature, such as routine painting, carpeting, simple hanging of drywall, basic electrical or plumbing work, landscaping. For ordering limitations and information, refer to the Special Ordering Procedures/Ordering Guide posted on www.gsa.gov .
ANCILLARY	Ancillary Supplies and Services - Ancillary supplies and/or services are support supplies and/or services which are not within the scope of any other SIN on this schedule. These supplies and/or services are necessary to complement a contractor's offerings to provide a solution to a customer requirement. This SIN may be used for orders and blanket purchase agreements that involve work or a project that is solely associated with the supplies and/or services purchased under this schedule. NOTE: When used in conjunction with a Cooperative Purchasing eligible SIN, this SIN is Cooperative Purchasing Eligible.

Customer Ordering Information

1a. Awarded Special Item Number(s): 332311P, 532490P, 238910, OLM, ANCRA, ANCILLARY.

1b. Lowest priced model for each awarded special item numbers:

332311P - \$44.45 Sq. Ft ANCRA - \$27.70 SF
 532490P - \$1.76 Sq. Ft ANCILLARY - \$720.24 Per SF
 238910 - \$22.16 Ln.

1c. Hourly rates: N/A

2. Maximum order guideline:

332311P - \$250,000 OLM - \$250,000
 532490P - \$300,000 ANCRA - \$250,000
 238910 - \$250,000 ANCILLARY - \$250,000

If the best value selection places your order over the Maximum Order identified in this catalog / pricelist, you have an opportunity to obtain a better schedule contract price. Before placing your order, contact the aforementioned contractor for a better price. The contractor may (1) offer a new price for this requirement (2) offer the lowest price available under this contract or (3) decline the order. A delivery order that exceeds the maximum order may be placed under the schedule contract in accordance with FAR 8.404.

3. Minimum Order Limitation: \$100.00

GSA SCHEDULE 47QSM20R0001

Schedule Price List



4. Geographic Coverage: Domestic, 50 states, Puerto Rico, Washington D.C., U.S. Territories, and to a CONUS port or consolidation point for orders received from overseas activities.
5. Points of Production: Burlison, Johnson Co., TX 76028; Diboll, Angelina Co., TX 75941; Waco, McLennan County TX 76712; Phoenix, AZ 85043
6. Basic discount: See GSA pricing below for units 1-4 5% GSA discount applied. For calculation of GSA Schedule price (price paid by customers ordering from GSA Schedule, and price to be loaded into GSA Advantage), contractor should deduct appropriate basic discount from list price and add prevailing IFF rate to negotiated discounted price (Net GSA price). Current IFF rate is 0.75%. Final Schedule contract award price is calculated as follows: Negotiated price divided by (1 minus .0075) which equates to Negotiated price divided by 0.9925. Example: $(\$100,000 / 0.9925) = \$100,755.67$
7. Quantity discount: SIN 332311P: Additional 1% on 5 Units or more. Does not apply to SIN 532490P.
8. Prompt payment terms: 1%-15 Days, Net 30
Information for Ordering Offices: Prompt payment terms cannot be negotiated out of the contractual agreement in exchange for other concessions.
- 9a. Gov. purchase cards must be accepted at or below the micro-purchase threshold
- 9b. Gov. purchase cards are accepted above micro-purchase threshold: Yes
10. Foreign items: None
- 11a. Time of delivery: SINS 332311P and 532490P 180 days after ARO. For SIN 238910 see approved delivery info within the approved price list.
- 11b. Expedited delivery: SINS 332311P: 150 days after ARO with coordination with MMG.
- 11c. Overnight/2-Day delivery: None
- 11d. Urgent requirements: Agencies can contact the Contractor's representative to affect a faster delivery. Customers are encouraged to contact the contractor for the purpose to request accelerate delivery.
12. FOB Point: Origin-prepay and add.
- 13a. Ordering Address:
Modular Management Group, Inc.
6602 Plaza Parkway, Fort Worth TX 76116
- 13b. Ordering procedures: Phone, Fax or
GSA Advantage.
14. Payment address:
Modular Management Group, Inc.
6602 Plaza Parkway
Fort Worth, TX 76116
15. Warranty provisions: Standard Comm. Warranty. No returns
16. Export packing charges: N/A
17. Terms and conditions of Gov. purchase card: Accepted on orders over the micro-purchase threshold of \$3,000
18. Terms and conditions of rental, maintenance/repair: N/A
19. Terms and conditions of install: See pg. 18 & 19
20. Terms and conditions of repair parts: N/A
21. List of service and distribution points: N/A
22. List of participating dealers:
Modular Concepts, Inc. (MCI)
SBA 8(a) Certified General Contractor
6602 Plaza Parkway, Fort Worth TX 76116
POC: Frank Sáenz
P 817.945.1667 | fsaenz@modularci.com
Adamo Security Group
11980 Woodside Ave, Ste. 1 Lakeside, CA 92040
POC: Zachary Stark
P 619.390.6706 | ZStark@adamossecurity.com
23. Preventive maintenance: None
- 24a. Environmental attributes: None
- 24b. Section 508 electronic info. tech. standards: N/A
25. Data Universal Number System Number: 606893969
26. System Award Management Registration Database: Registered

Modular Management Group, Inc.

Installation Services: Description of Services

Service 1: Standard Set-Up - Standard set-up for a single wide modular unit up to 60' long with 16" x 16" double drystack CMU piers (25" max. ht.) on ABS pads on grade. Installation shall consist of finishing interior and exterior seams to include block, level and seam building (on a truck-accessible, dry and level site). Carpeted floors will be professionally seamed, and/or vinyl tile installed across mate line as appropriate to fully conceal seam. Ceiling seam shall be acoustic T-Grid ceiling tile site installed across seam to totally conceal mate line. Wall seams shall be vinyl covered battens. Exterior seam trim shall be a 1" x 6" wood or 26 Ga. Steel "Hat Trim" as appropriate for siding selected. Roof seam trim shall be material recommended by roofing supplier. Price also includes standard site and building clean-up such as removal of debris, sweeping etc. of a 720 SF building. This price excludes any installation of roof vents, HVAC roof/pad mounted units or plumbing connections. The cost also does not include any site work. The price shown assumes the site is ready for the unit at the time of delivery. **All labor and materials installed in accordance with applicable codes.**

Service 2: Concrete Footings - Poured grade footers. Includes reinforcement.

Service 3: Drystack CMU Piers - Cost includes 16" x 16" double drystack to a maximum of 25" high.

Service 4: Anchors - Auger earth anchor; concrete embedded "minuteman" anchor or equal

Service 5: Deck Installation - ADA compliant 6x5 deck with steps and handrails and 30' handicapped ramp, not to exceed 4-step riser. Deck is built new from treated wood, galvanized steel or aluminum.

Service 6: Skirting Installation - Matching skirting up to 32" high.

Service 7: Electrical Service - NEMA 3-R disconnect as required, mounted on the proposed modular building and connected to subpanels located in each modular unit. Sub-feeds from disconnect to subpanels shall be copper cable sized appropriately. Connection from existing power source to proposed disconnect is excluded. Cost includes ground rod installation.

Service 8: Plumbing Service - Manifold sanitary and potable water lines for 2 handicapped single restrooms, consisting of 2 water closets, 2 lavatories, 1 hot water heater, 1 water cooler and 1 coffee bar sink. Sanitary sewer shall be ABS/PVC piping and potable water shall be copper. Manifold shall be completed to a single point terminated in the crawl space of the proposed modular building. Connection from proposed single point termination to existing plumbing services is excluded. Thermostatically controlled heat tracing and insulation is included in the cost shown.

Service 9: Fire Alarm Installation - Furnish and install a standalone fire alarm system consisting of 2 manual pull stations, 2 AV devices, 2 smoke detectors, 1 heat detector and 1 main control panel. Cost also includes the panel having the ability to notify the fire department via dialer.

Service 10: Phone and Data - Furnish and install 1 CAT 5 phone/data drop in an existing single gang wall box with a conduit stub. Cable for drop shall be terminated in a phone/data room located in the proposed modular building. Maximum distance from drop to phone/data room shall be 25' Punch Panel and connection to existing service is excluded

Service 11: Site Superintendent - 1 Modular Management Group representative on the site to supervise smooth execution of the project.

Service 12: Engineered Foundation Plan - Cost based on typical 720 SF building.

Service 13: Made Ready for Occupancy - There is an additional cost for more thorough cleaning where customer requests the facility be made ready for occupancy (cleaning such as striping/waxing floors, cleaning windows, beyond the standard construction site clean-up).

GSA SCHEDULE 47QSMD20R0001 Schedule Price List



Modular Management Group, Inc.

Pricing of Services

SIN	Service	Description	Unit of Issue	Price REGION 1 North (Note 1)	Price REGION 2 South (Note 1)	Time of Delivery Per Floor
238910	1	Standard Set-Up Per Floor	Per Floor	\$1,994.50	\$2,216.11	2 Days
238910	2	Concrete Footings	Each	\$221.62	\$387.82	2 Hour
238910	3	Dry stack CMU Piers	Each	\$55.41	\$88.64	30 Min.
238910	4	Anchors	Each	\$55.41	\$60.94	30 Min.
ANCRA	5	Deck Installation	SF	\$27.70	\$33.24	2 Days
238910	6	Skirting Installation	LF	\$22.16	\$24.38	15 Min.
ANCRA	7	Electrical Service	Per Floor	\$2,770.13	\$3,324.17	3 Days
ANCRA	8	Plumbing Service	Per Floor	\$2,216.11	\$2,770.13	3 Days
238910	9	Fire Alarm Installation	Per Floor	\$6,648.32	\$4,986.24	3 Days
238910	10	Phone and Data	Per Floor	\$2,216.11	\$2,770.13	1 Day
ANCILLARY	11	Site Superintendent	Per Week	\$4,653.83	\$4,653.83	N/A
238910	12	Engineered Foundation Plan	Per Floor	\$2,770.13	\$2,770.13	1 Week
ANCILLARY	13	Made Ready for Occupancy (Note 3)	Per Floor	\$720.24	\$831.04	1 Day

Note 1: The dividing line separating Region 1 from Region 2 begins in the west at Santa Cruz, CA and goes east directly to the intersection of the NV/UT/AZ borders. It then runs east following the state border lines between UT/AZ, CO/NM, KS/OK, MO/AR, KY/TN and VA/NC terminating on the east coast.

Note 2: Above prices do not include reimbursable expenses such as lodging, meals, travel/transportation costs, or incidental expenses.

Note 3: MMG prices include standard site and building clean-up. (Removal of construction debris, sweeping etc.). Upon customer request, a more thorough cleaning can be provided to make the facility ready for occupancy.