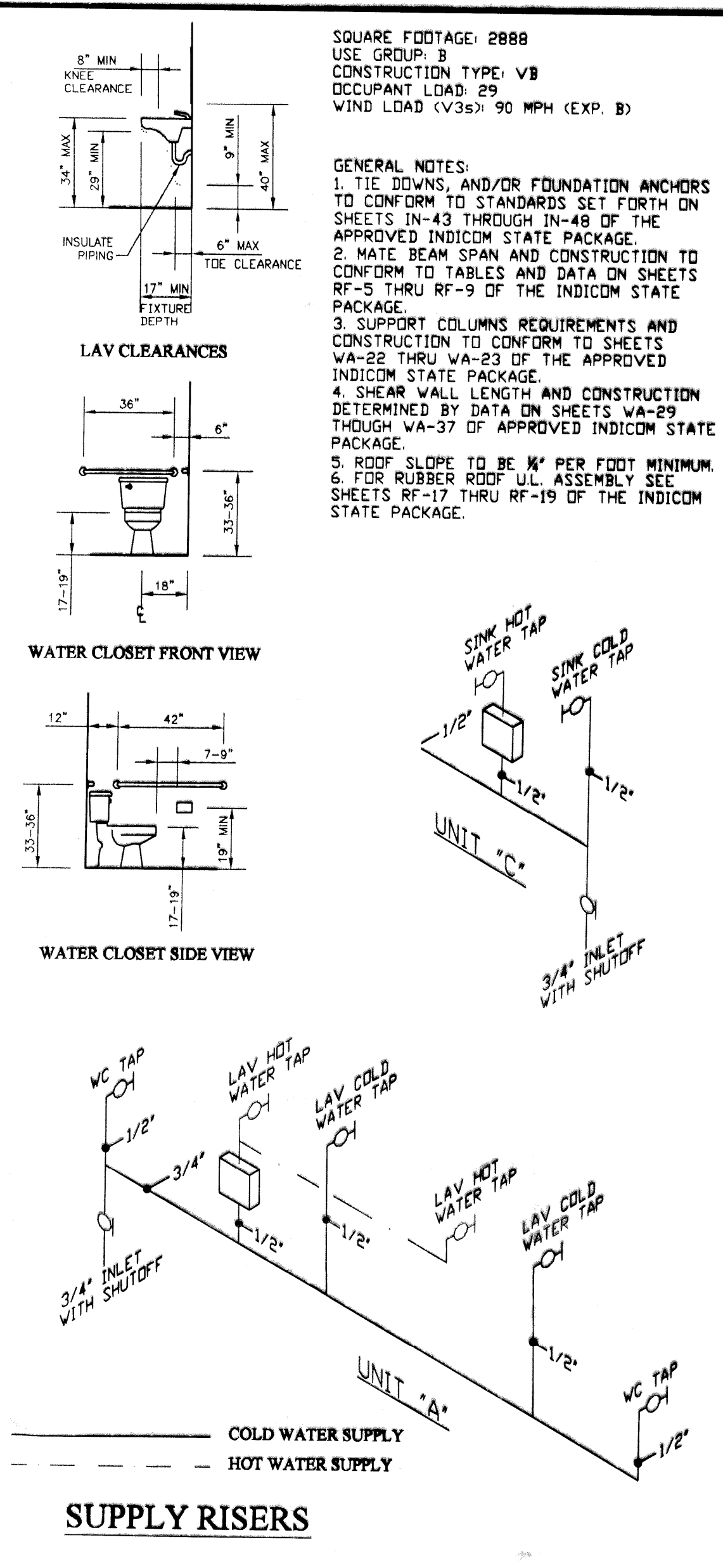
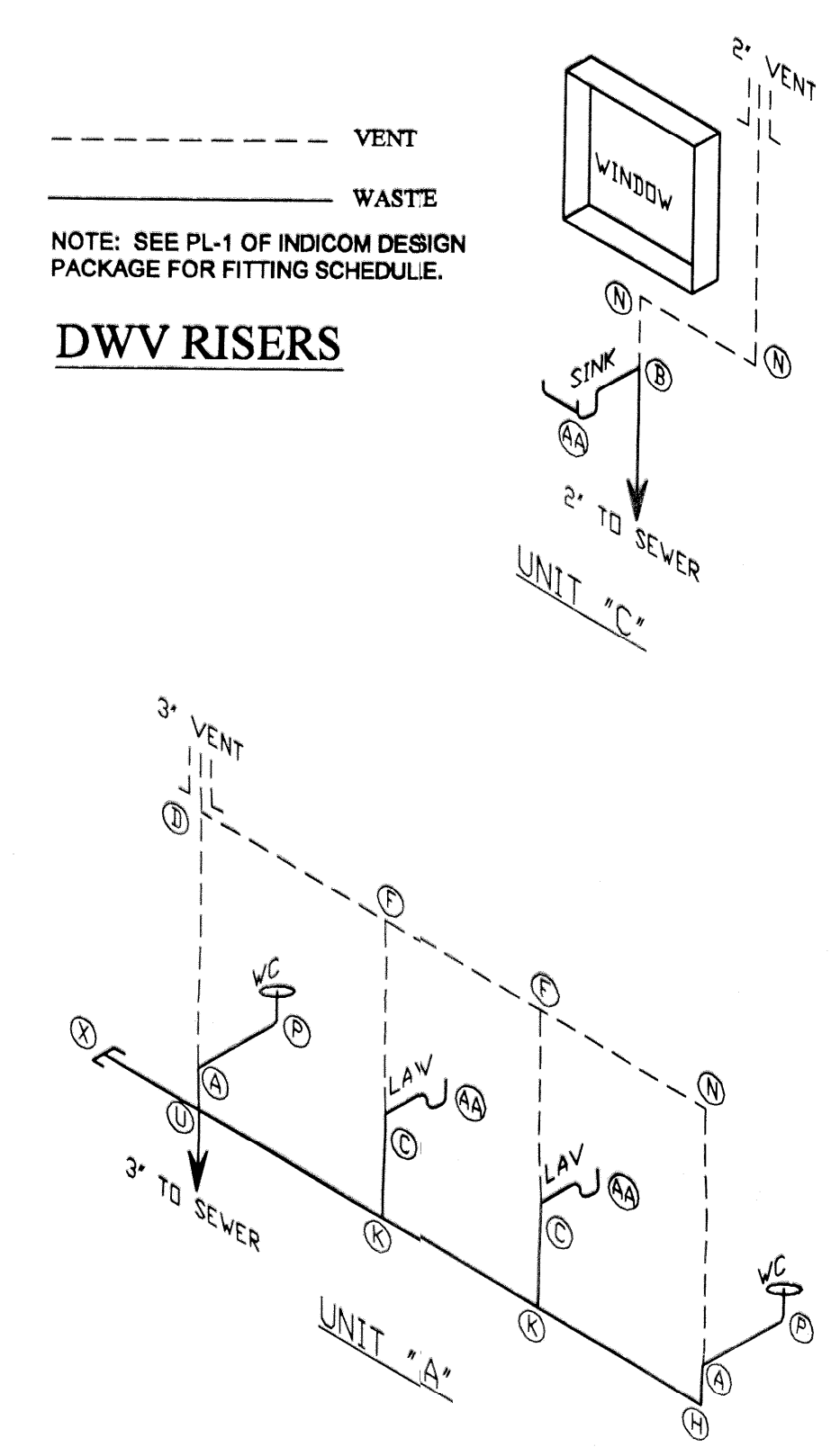


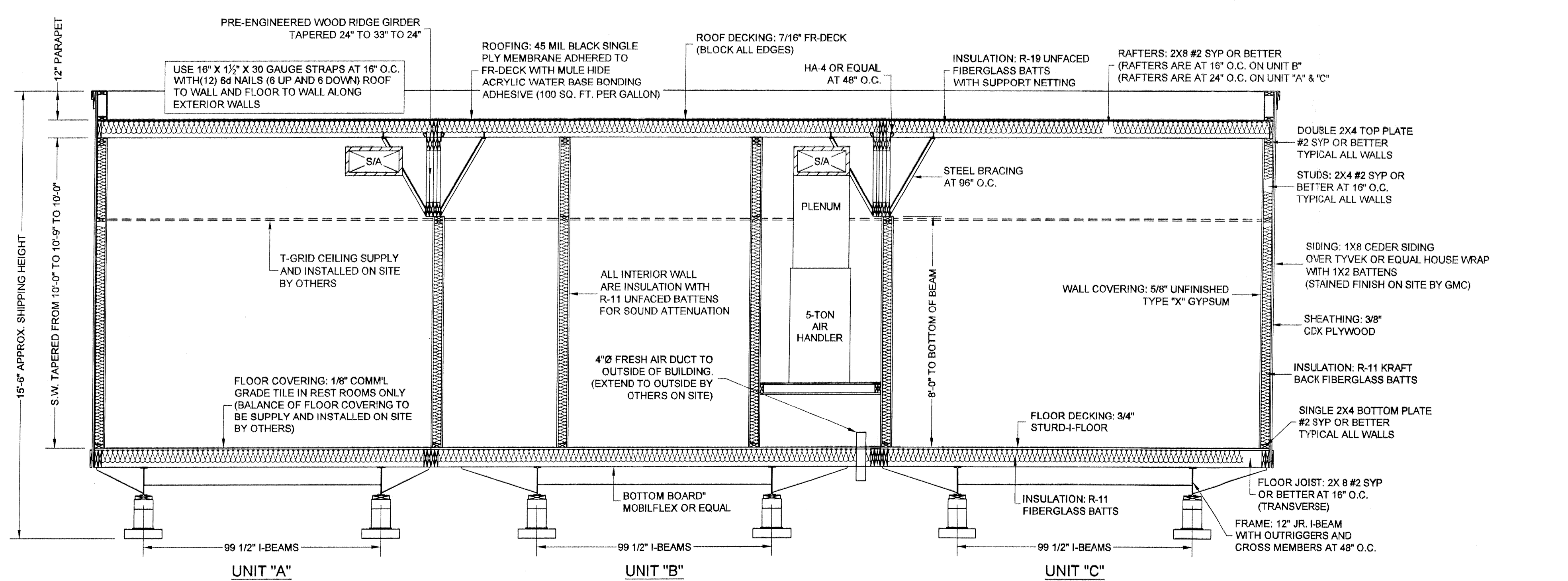
**FLOOR PLAN**  
1/4" = 1'-0"

FLOOR PLAN LEGEND	
	HANDICAPPED TANK TYPE WATER CLOSET
	LAMINATE COUNTERTOP WITH SINK (FAUCET ON SITE BY GMC)
	INSTA-HOT ELECTRIC WATER HEATER (EX-55 DOUBLE SINK) (EX-65 RESTROOM)
	36" GRAB BAR
	42" GRAB BAR

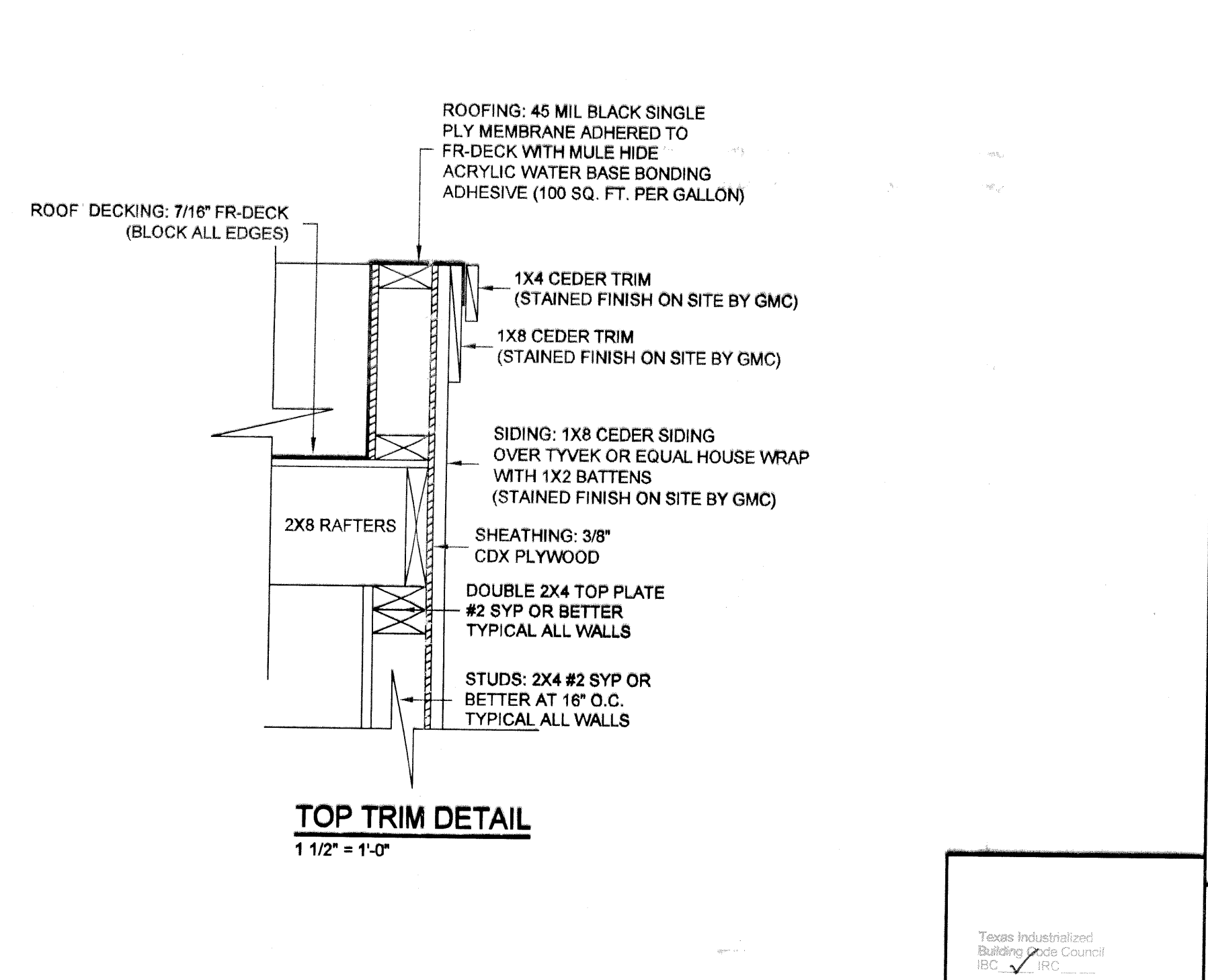


SQUARE FOOTAGE: 2888  
USE GROUP: B  
CONSTRUCTION TYPE: VB  
OCCUPANT LOAD: 29  
WIND LOAD (V30): 90 MPH (EXP. B)

GENERAL NOTES:  
1. TIE DOWNS, AND/OR FOUNDATION ANCHORS TO CONFORM TO STANDARDS SET FORTH ON SHEETS IN-43 THROUGH IN-48 OF THE APPROVED INDICOM STATE PACKAGE.  
2. MATE BEAM SPAN AND CONSTRUCTION TO CONFORM TO TABLES AND DATA ON SHEETS RF-5 THRU RF-9 OF THE INDICOM STATE PACKAGE.  
3. SUPPORT COLUMNS REQUIREMENTS AND CONSTRUCTION TO CONFORM TO SHEETS WA-29 THRU WA-29 OF THE APPROVED INDICOM STATE PACKAGE.  
4. SHEAR WALL LENGTH AND CONSTRUCTION DETERMINED BY DATA ON SHEETS WA-29 THRU WA-37 OF APPROVED INDICOM STATE PACKAGE.  
5. ROOF SLOPE TO BE 1/4" PER FOOT MINIMUM.  
6. FOR RUBBER ROOF UL ASSEMBLY SEE SHEETS RF-17 THRU RF-19 OF THE INDICOM STATE PACKAGE.



**BUILDING CROSS-SECTION AT HITCH END**  
3/8" = 1'-0"



**TOP TRIM DETAIL**  
1 1/2" = 1'-0"

FOUNDATION TO BE CONSTRUCTED IN ACCORDANCE WITH THE INDICOM STATE PACKAGE OR DESIGNED BY A REGISTERED PROFESSIONAL ENGINEER. CRAWL SPACE ACCESS AND VENTING TO BE PROVIDED AND SITE INSTALLED BY OTHERS IN ACCORDANCE WITH THE 2003 IBC SECTIONS 1209.1 AND 1209.3.1 RESPECTIVELY.

**INDICOM BUILDINGS, INC.**  
INDUSTRIALIZED COMMERCIAL BUILDINGS  
721 N. BURLESON BLVD - BURLESON, TX 76028  
817-447-1213 FAX 817-447-2751

DO NOT COPY  
THIS DRAWING IS THE EXCLUSIVE PROPERTY OF  
INDICOM BUILDINGS, INC., BURLESON, TX  
P.O. BOX 1567  
721 N. BURLESON BLVD.

DEALER: GMC  
DEW  
PROJECT: 42 X 74 (70)  
TEXAS LAND & LAKES  
PROJECT NUMBER:  
06-168

SCALE:  
AS NOTED  
PLOT DATE:  
11/27/2006

SALESMAN:  
R.P.  
DRAWN BY:  
MJM  
SERIAL NUMBERS:

SHEET:  
2 OF 4

Texas Industrialized Building Code Council  
IBC, INC.  
DEC 06 2006  
Approved PPS Corp. 18000 7